



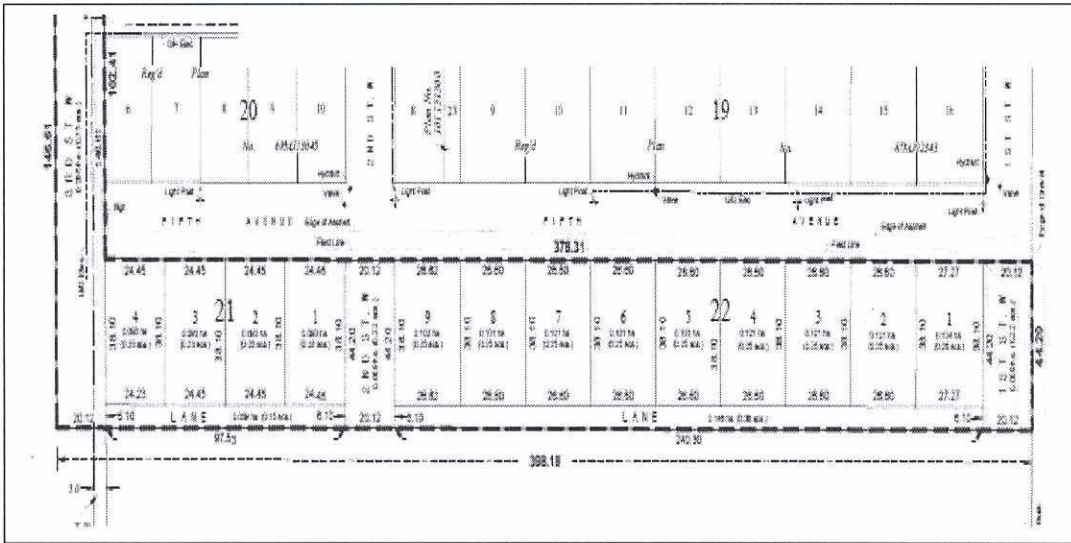
Town of Elrose *NEWSLETTER*

Box 458, Elrose, Saskatchewan, S0L 0Z0
Telephone (306) 378-2202 Fax (306) 378-2966 townofelrose@sasktel.net

June 2022



Town of Elrose Future Development!



*The
Town of Elrose
is proud to
announce the
development of
13 lots on the
south side of
5th Avenue West.*

*We look forward to
sharing more
information in the
future, regarding
this expansion!*

NEW – Town Office Hours

Beginning June 1, 2022 the TOWN OFFICE will be closed to the public on MONDAYS.

NEW TOWN OFFICE HOURS are as follows:

Tuesday – Friday 8:00am – 12:30pm & 1:00pm - 4:30pm

2022 Tax Notices

Please find your Tax Notice enclosed. Payments received on or before **June 30th** will receive a 5% discount on the *municipal portion* of your taxes.

Open House and Jim Mills Plaque Unveiling – June 11th at 3:00pm

We will be holding an Open House to share our “new” office on June 11th beginning at 3:00pm. During the open house we will also unveil a plaque in memory of Former Mayor Jim Mills.

THANK YOU to the ECS Staff and Students for doing a town wide clean up on May 11th. It is very much appreciated!

Congratulations to the Graduating Class of 2022!

From the Mayor, Council and Staff

Drinking Water Quality and Compliance 2021 Annual Notice to Consumers

Introduction

The Water Security Agency and the Ministry of Environment requires that at least once each year waterworks owners provide notification to consumers of the quality of water produced and supplied as well as information on the performance of the waterworks in submitting samples as required by a Minister's Order or Permit to Operate a waterworks. The following is a summary of the Town of Elrose water quality and sample submission compliance record for the 2021 time period. This report was completed on May 19, 2022. Readers should refer to Water Security Agency's [Municipal Drinking Water Quality Monitoring Guidelines, June 2015, EPB 502](#) for more information on minimum sample submission requirements and the meaning of type of sample. Permit requirements for a specific waterworks may require more sampling than outlined in the department's monitoring guidelines. If consumers need more information on the nature and significance of specific water tests, for example, "what is the significance of Selenium in a water supply", more detailed information is available from: http://www.hc-sc.gc.ca/ewh-semt/pubs/water-eau/index_e.html.

Water Quality Standards

Bacteriological Quality

Parameter/Location	Limit	Regular Samples Required	Regular Samples Submitted	# of Positive Regular Submitted (%)
Total Coliform	0 Organisms/100 mL	24	25	0%
E. coli	0 Organisms/100 mL	24	25	0%
Background Bacteria	Less than 200/100 mL	24	25	0%

Water Disinfection –

Chlorine Residual in Distribution System for Test Results Submitted with Bacteriological Samples

Parameter	Minimum Limit	Total Chlorine Residual Range	Free Chlorine Residual Range	# Tests Required	# Tests Submitted	# Adequate Chlorine (%)
Chlorine Residual	0.1 mg/L free OR 0.5 mg/L total	0.17 – 1.49	0.24 – 1.21	24	25	100%

Water Disinfection - Free Chlorine Residual for Water Entering Distribution System from Waterworks Records- From Water Treatment Plant Records

Parameter	Limit (mg/L)	Test Level Range	# Tests Performed	# Tests Not Meeting Requirements
Free Chlorine Residual	at least 0.1	0.67 – 0.91	365	0

A minimum of 0.1 milligrams per litre (mg/L) free chlorine residual is required for water entering the distribution system. Tests are normally performed on a daily basis by the waterworks operator and are to be recorded in operation records. This data includes the number of free chlorine residual tests performed, the overall range of free chlorine residual (highest and lowest recorded values) and the number of tests and percentage of results not meeting the minimum requirement of 0.1 mg/L free chlorine residual.

Turbidity – From Water Treatment Plant Records

Parameter	Limit (NTU)	Test Level Range	# Tests Not Meeting Requirements	Maximum Turbidity (NTU)	# Tests Required	# Tests Performed
Turbidity	1.0	0.03 - 0.06	0	less than 1.0	365	365

More information on water quality and sample submission performance may be obtained from:

Town of Elrose
Box 458 Elrose, SK S0L 0Z0
Telephone: 306-378-2202
Fax: 306-378-2966
E-mail address: townofelrose@sasktel.net



**Saskatchewan
Ministry of
Environment**

